



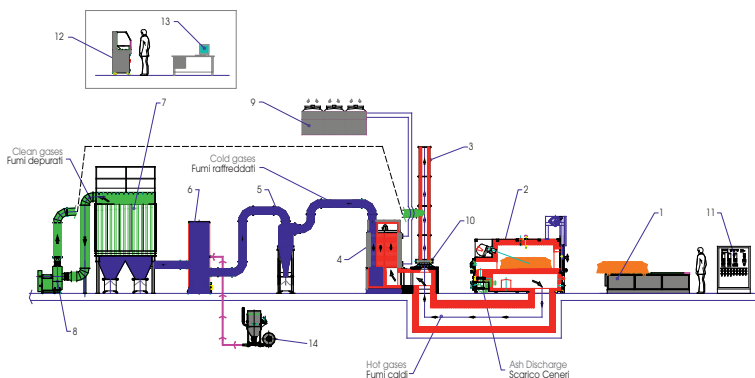
FLUE GAS CLEANING SYSTEMS AND MERCURY ABATEMENT

MAIN FEATURES:

- › High efficiency of flue gas cleaning
- › Emissions in compliance with more restrictive European standards
- › Completely automatic process
- › Minimum maintenance
- › Adaptable to existing plants
- › Urea additioning

CREMATION PLANT GEM TYPE CRM/6

01. Coffin insertion device
02. Cremator GEM type CRM/6
03. Chimney
04. Heat exchanger flue gas/water
05. Cyclon
06. Reaction tower
07. Bag hose filter unit
08. I.D. fan
09. Air-cooler
10. Emergency flue gases damper
11. Electric control board
12. Ash processor
13. Control desk
14. Reagent injection system



FLUE GAS CLEANING SYSTEMS

The GEM-Matthews flue gas treatment plant guarantees that the emissions in the atmosphere are within the limits foreseen by the most recent European and international regulations and by local authorities, assuring the full dedusting and the control of the other pollution elements. The adopted technological solutions, including reaction tower with reagent injection unit and bag hose filter, is the B.A.T. (Best available technology) either for the efficiency of dioxins, mercury and other metals abatement either for plant maintenance and management.

Generally downstream the post combustion chamber a heat exchanger is installed, with cooling function; so the fumes will be cooled in order to reach the right temperature for flowing through the reaction tower and bag hose filter.

The GEM-Matthews bag hose filters don't need so much space for installation because are very compact; they have also very high filtering capacity.

GEM-Matthews filtering technology can be applied to existing cremators in order to be in compliance with new and more restrictive regulations.

FLUE GAS TREATMENT SYSTEMS AND MERCURY ABATEMENT

	GEM cremator emissions*	European standards*
TOTAL DUST	1,4 mg/Nm ³	10 mg/Nm ³
COT	< 0,4 mg/Nm ³	10 mg/Nm ³
NO ₂	126 mg/Nm ³	200 mg/Nm ³
SO ₂	5 mg/Nm ³	50 mg/Nm ³
CO	11 mg/Nm ³	50 mg/Nm ³
HCl	0,5 mg/Nm ³	30 mg/Nm ³
HF	0,5 mg/Nm ³	4 mg/Nm ³
Hg	0,001 mg/Nm ³	0,05 mg/Nm ³
PCDD + PCDF (TEQ)	0,01 ng/Nm ³	0,1 ng/Nm ³
HEAVY METALS	0,01 mg/Nm ³	0,5 mg/Nm ³

*Referred to 11% of O₂, normal conditions, dry gas



Filtration



Remote Control



**Gem
Matthews**

GEM - Matthews International S.r.l.
33100 Udine / Italia - Via Zanussi 315 / Z.I.U.
tel 0432 524374 / 524103 - fax 0432 529977
email gem@matweu.com - www.geminc.it